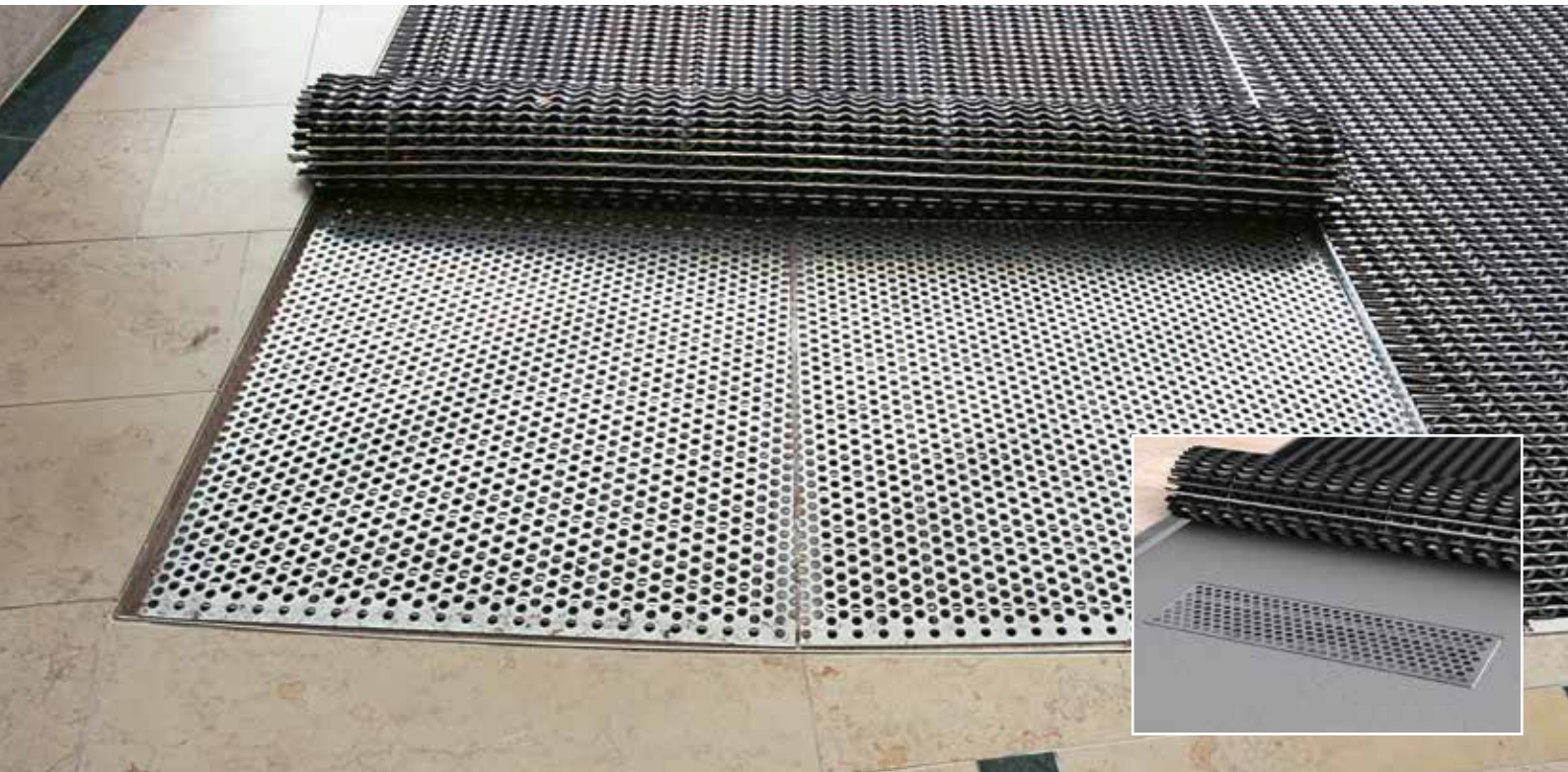


Kabe Outlet grids & drains

Cantilevered, open, steel lower frame for the Kabe Original, which is used to obtain a self-cleaning function since the dirt from shoes falls through both the mat and the drainage grate, down into a deeper recess. The dirt collected only needs to be emptied out a couple of times a year, depending on the traffic intensity and the season, which makes the mat almost self-maintaining – all year round!

The Kabe drain is embedded and connected to the main drain to lead away the water. The drain is available in two models and is provided with turnable clasps that can be turned in the direction wanted during casting.

Read more about our products on kabe-mattan.se.



KABE OUTLET GRIDS & DRAINS

WEIGHT

Approximately 33 kg/m².

SHEET

Perforated plate SS 1142-32.

THICKNESS

3 mm.

PATTERN

Round holes 15 mm with 20 mm spacing in triangular pattern.

OPEN AREA

51%.

GRATING

Mesh width 38 x 94 mm (free opening).

LOAD-BEARING STEEL

Flat bar 25 x 3 mm.

CROSS BAR

Twisted square bar 6 mm.

GRID SIZE

Made to measure, max. size of a single piece 1000 x 1260 mm (A x B). To cover larger areas, the grid is divided into suitably sized sections.

SPAN

Max. 1200 mm in the support direction.

SURFACE TREATMENT

Hot dip galvanised acc. SS-EN ISO 1461. Drains are manufactured in acid resistant stainless steel plate SS 2343, apart from strainer, which is manufactured in hot-dip galvanised expanded metal.