

INSTRUCTIONS FOR INSTALLATION

Kabe Casting Frames – assembled on site

Kabe 20R and 25R – Screw joint frame

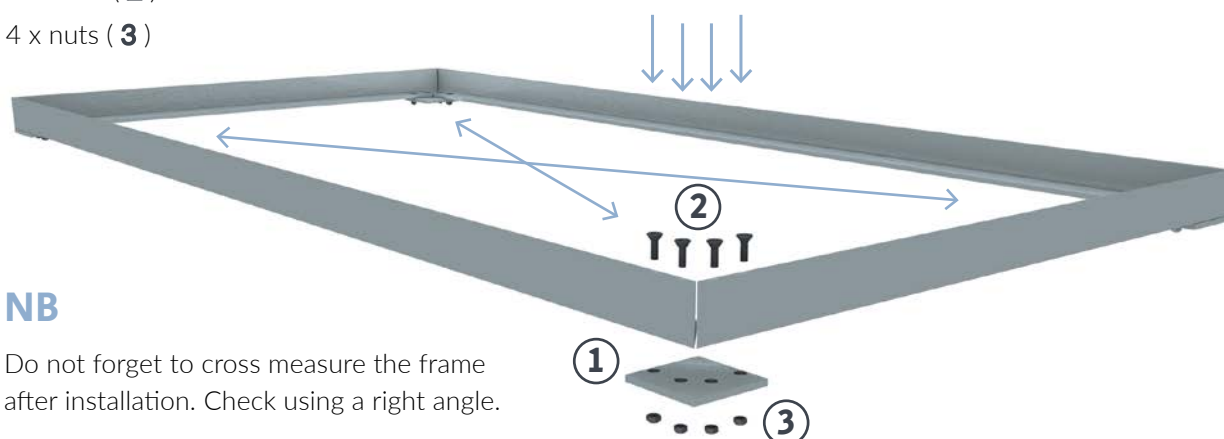
Assemble the frame using enclosed screw and washer. Measure the diagonal distances of the frame to check that the corners are at right angles. For larger frames, counter-stays, e.g. wooden battens, may need to be sawn to fit on site to prevent the frame from taking a “hour-glass” shape, which could mean that the mat will not drop into the frame.

Each corner is to be joined using:

1 x washer (**1**)

4 x bolts (**2**)

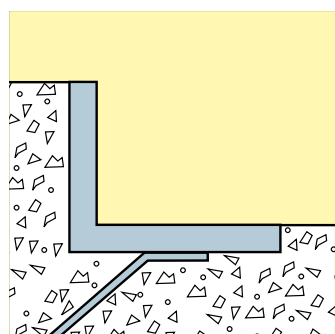
4 x nuts (**3**)



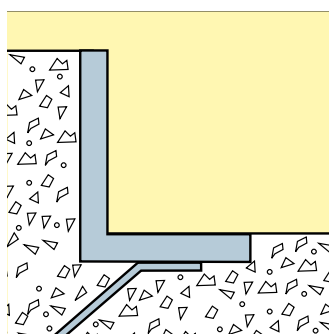
NB

Do not forget to cross measure the frame after installation. Check using a right angle.

Profiles



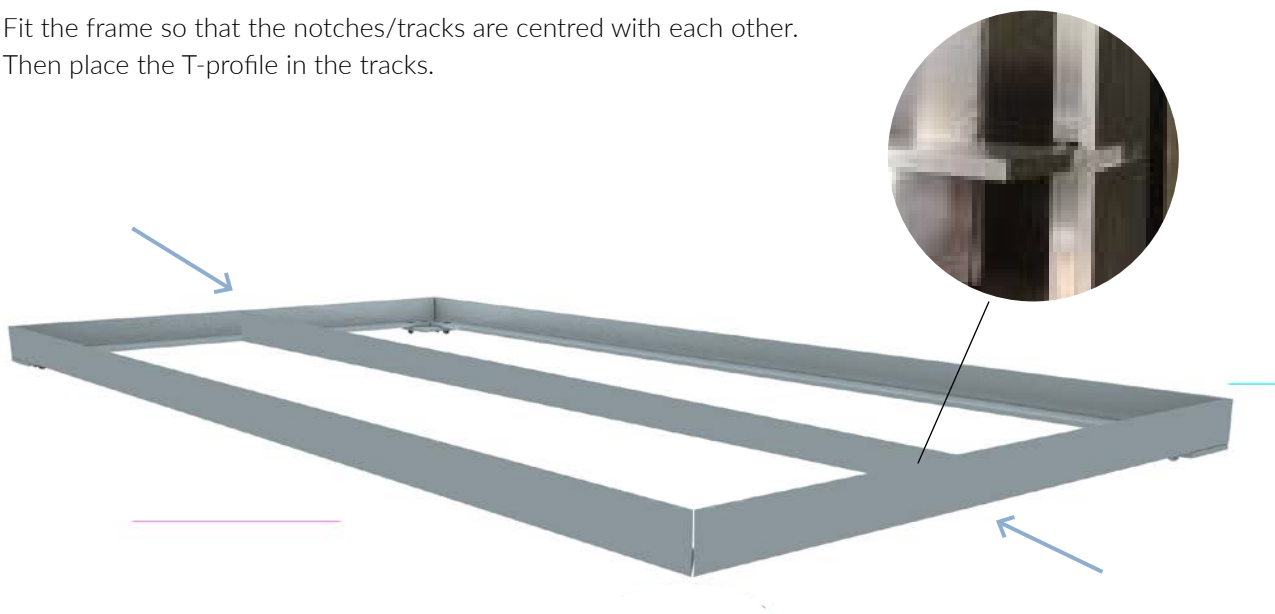
Kabe 20R. For mats and gratings, height 20-22 mm. Profile 25 x 31 x 4 mm.



Kabe 25R. For mats and gratings, height 25 mm. Profile 31 x 25 x 4 mm.

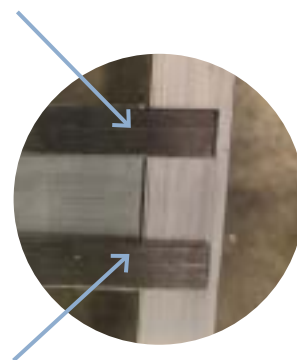
Kabe 20R and 25R – Screw joint frame with intermediate brace

Fit the frame so that the notches/tracks are centred with each other. Then place the T-profile in the tracks.



If necessary:

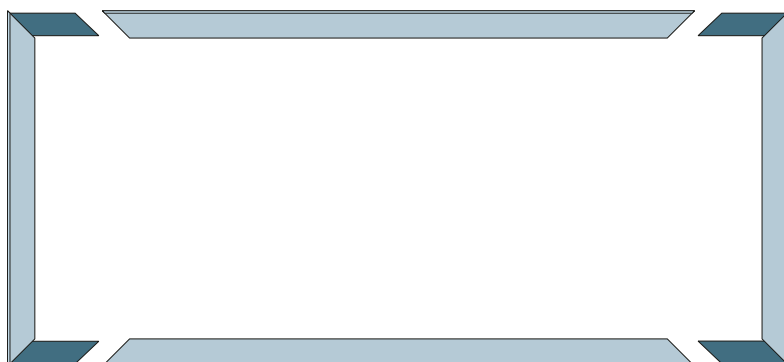
Turn the two outermost clasps on the underside at each end of the T-profile to keep it in position.



Kabe 23R – Insertion frame

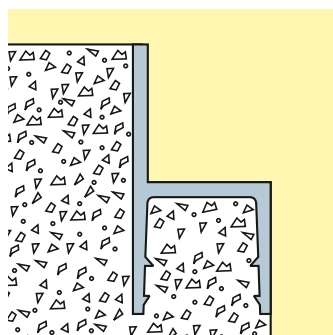
Kabe Frame 23R is supplied in loose lengths made to measurements with 45° corners and corner connectors. Insert the connectors in the profile and tap gently with a rubber hammer if needed.

Contact us for more information.



Kabe 23R. For mats and gratings, height 22-25 mm.

Profile



Kabe 23R. For mats and gratings, height 22-25 mm. Profile 23 x 23 x 2.5 mm.

Ordering

When ordering please state exterior frame measurements. Please let us be responsible for the fitting of the mat or grid by ordering the casting frame and mat or grid at the same time. Always remember to state the measurements in the order A x B.

A = width, left to right.

B = front to back (walking direction).

Contact us for more information.